

# Schottky Dual Diode

## **SBLF1040CT**

40V / 10A

# DATASHEET

from

[www.web-bcs.com](http://www.web-bcs.com)

OEM – General Semiconductor

Source: General Semiconductor Databook 1998

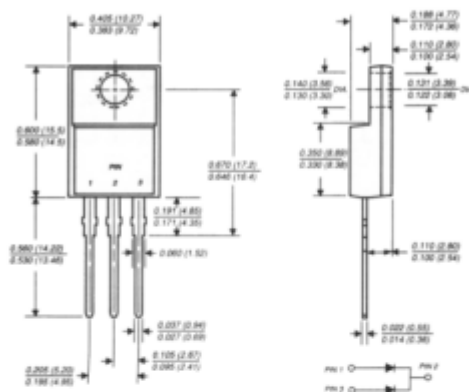
NEW PRODUCT NEW PRODUCT NEW PRODUCT

# SBLF1030CT AND SBLF1040CT

## SCHOTTKY RECTIFIER

Reverse Voltage - 30 and 40 Volts Forward Current - 10.0 Amperes

### ITO-220AB



Dimensions in inches and (millimeters)

### FEATURES

- Plastic package has Underwriters Laboratory Flammability Classifications 94V-0
- Metal silicon junction, majority carrier conduction
- Low power loss, high efficiency
- High current capability, low forward voltage drop
- High surge capacity
- For use in low voltage, high frequency inverters, free wheeling, and polarity protection applications
- Guardring for overvoltage protection
- High temperature soldering guaranteed: 250°C/10 seconds, 0.25" (6.35mm) from case



### MECHANICAL DATA

**Case:** JEDEC ITO-220AB molded plastic body  
**Terminals:** Lead solderable per MIL-STD-750, Method 2026  
**Polarity:** As marked  
**Mounting Position:** Any  
**Mounting Torque:** 5 in. - lbs max.  
**Weight:** 0.08 ounce, 2.24 grams

### MAXIMUM RATINGS AND ELECTRICAL CHARACTERISTICS

Ratings at 25°C ambient temperature unless otherwise specified.

	SYMBOLS	SBLF1030CT	SBLF1040CT	UNITS
Maximum repetitive peak reverse voltage	VRRM	30	40	Volts
Maximum RMS voltage	VRMS	21	28	Volts
Maximum DC blocking voltage	VDC	30	40	Volts
Maximum average forward rectified current at Tc=95°C	I(AV)	10.0		Amps
Peak forward surge current, 8.3ms single half sine-wave superimposed on rated load (JEDEC Method)	IFSM	175.0		Amps
Maximum instantaneous forward voltage per leg at 5.0A (NOTE 1)	VF	0.55		Volts
Maximum instantaneous reverse current at rated DC blocking voltage (NOTE 1)	IR	Tc=25°C 50.0 Tc=100°C		mA
Typical thermal resistance (NOTE 2)	ReJC	5.0		°C/W
Operating and storage temperature range	TJ, TSTG	-40 to +125		°C

**NOTES:**

- (1) Pulse test: 300µs pulse width, 1% duty cycle
- (2) Thermal resistance from junction to case per leg

**RATINGS AND CHARACTERISTIC CURVES SBLF1030CT AND SBLF1040CT**

