

Schottky Diode

SBLF1030

30V / 10A

DATASHEET

from

www.web-bcs.com

OEM – General Semiconductor

Source: General Semiconductor Databook 1998

NEW PRODUCT

NEW PRODUCT

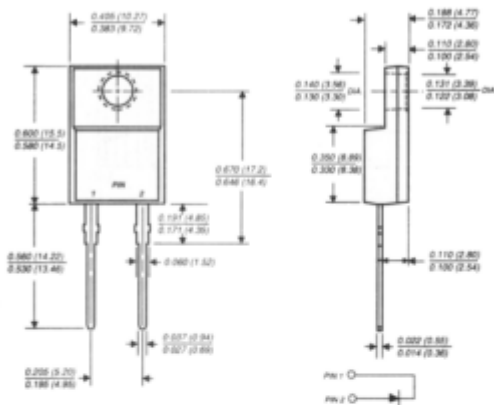
NEW PRODUCT

SBLF1030 AND SBLF1040

SCHOTTKY RECTIFIER

Reverse Voltage - 30 and 40 Volts Forward Current - 10.0 Amperes

ITO-220AC



Dimensions in inches and (millimeters)

FEATURES

- ◆ Plastic package has Underwriters Laboratory Flammability Classifications 94V-0
- ◆ Metal silicon junction, majority carrier conduction
- ◆ Low power loss, high efficiency
- ◆ High current capability, low forward voltage drop
- ◆ High surge capability
- ◆ For use in low voltage, high frequency inverters, free wheeling, and polarity protection applications
- ◆ Guardring for overvoltage protection
- ◆ High temperature soldering guaranteed: 250°C/10 seconds, 0.25" (6.35mm) from case



MECHANICAL DATA

Case: JEDEC ITO-220AC molded plastic body
Terminals: Leads solderable per MIL-STD-750, Method 2026
Polarity: As marked
Mounting Position: Any
Mounting Torque: 5 in. - lbs. max.
Weight: 0.08 ounces, 2.24 grams

MAXIMUM RATINGS AND ELECTRICAL CHARACTERISTICS

Ratings at 25°C ambient temperature unless otherwise specified.

	SYMBOLS	SBLF1030	SBLF1040	UNITS
Maximum repetitive peak reverse voltage	VRRM	30	40	Volts
Maximum RMS voltage	VRMS	21	28	Volts
Maximum DC blocking voltage	VDC	30	40	Volts
Maximum average forward rectified current at T _C =110°C	I(AV)	10.0		Amps
Peak forward surge current, 8.3ms single half sine-wave superimposed on rated load (JEDEC Method)	IFSM	250.0		Amps
Maximum instantaneous forward voltage at 10A (NOTE 1)	V _F	0.60		Volts
Maximum instantaneous reverse current at rated DC blocking voltage (NOTE 1)	I _R	50.0		mA
Typical thermal resistance (NOTE 2)	R _{θJC}	4.0		°C/W
Operating and storage temperature range	T _J , T _{STG}	-40 to +125		°C

NOTES:

- (1) Pulse test: 300µs pulse width, 1% duty cycle
- (2) Thermal resistance from junction to case per leg

RATINGS AND CHARACTERISTIC CURVES SBLF1030 AND SBLF1040

